

The wise choice



Micro-Tronics

for all your filter needs

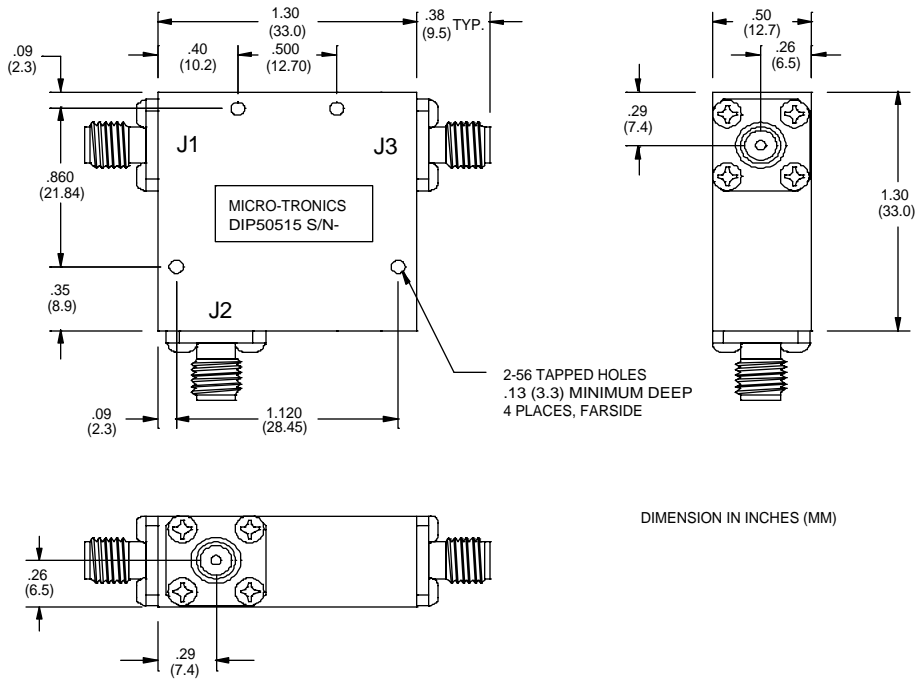
Micro-Tronics is an operating division of O.M. Jones, Inc.

Telephone: 209-532-1008

Facsimile: 209-532-1009

e-mail: sales@micro-tronics.net

Model DIP50515



Micro-Tronics Model DIP50515 was specifically designed to pass 0-3800 MHz and 4200-18000 MHz while maintaining low insertion loss and sharp rejection. The basic Contiguous Diplexer design can also be adapted to custom applications.

Specifications:		
Passband (MHz)	0-3800	PORT J1-J2
Passband (MHz)	4200-18000	PORT J1-J3
Passband Insertion Loss:	1.5 dB maximum	PORT J1-J2
Passband Insertion Loss:	1.5 dB maximum	PORT J1-J3
VSWR(0-18000 MHz):	2.0:1 maximum	PORT J1
Rejection:	50 dB minimum, 4600-18000 MHz	PORT J1-J2
Rejection:	50 dB minimum, 0-3400 MHz	PORT J1-J3
Crossover Frequency	4000 MHz \pm 40MHz	
Crossover Insertion Loss	6.0 dB maximum	
Operating Power:	2 W CW maximum	

Connectors:

Model #:	Port 1	Port 2,3
DIP50515:	SMA Female	SMA Female
DIP50515-01:	SMA Male	SMA Female
DIP50515-02:	SMA Female	SMA Male
DIP50515-03:	SMA Male	SMA Male

